

Operating & Cleaning Instructions

BIRKO DELUXE SOUP & FOOD WARMER :



Model: 1030601- Black

Model	1030601
Capacity	9 Litres
Voltage	220 - 240 VAC
Wattage	400 - 476 Watts
Weight	4.5 Kg
Dimensions	H 36cm x Dia. 34.5cm

CAUTION: Read the instructions before using the appliance.

This appliance is suitable for commercial use.

Do not disconnect the appliance with wet hands and do not pull on the supply cord.

Do not install outside or in an area that may be cleaned with a water jet.

Only replace the supply cord with the type specified by Birko. If the cord is damaged contact the manufacturer, Birko service agent or similar qualified person for further advice.

CAUTION: if foam or liquid escapes from the appliance, switch it off immediately.

Operating and Maintenance:

*Plug the unit into a nominal 230 Volt -10 amp electrical socket.

* The appliance is to be used for cooking with WATER & STEAM ONLY. Do not operate the appliance without sufficient water. Add 0.6L of water between the stainless steel liner and internal aluminium container. Never over-fill with water and under no circumstances should the stainless steel liner float up, even when empty. Remove any excess water immediately.

*The temperature control should be set between 1 and 8 and care should be taken to always operate the kettle at the lowest setting possible to maintain correct serving temperature. Settings between 8 and 12 are for initial heat up and the unit should be returned to 8 or below when the correct temperature has been achieved.

*A neon light will glow when the unit is turned on. Turn the dial to 0 to switch off. To isolate the kettle from the electrical supply, unplug it from the wall socket.

*Always keep the removable hinged lid attached and in the closed position when not serving.

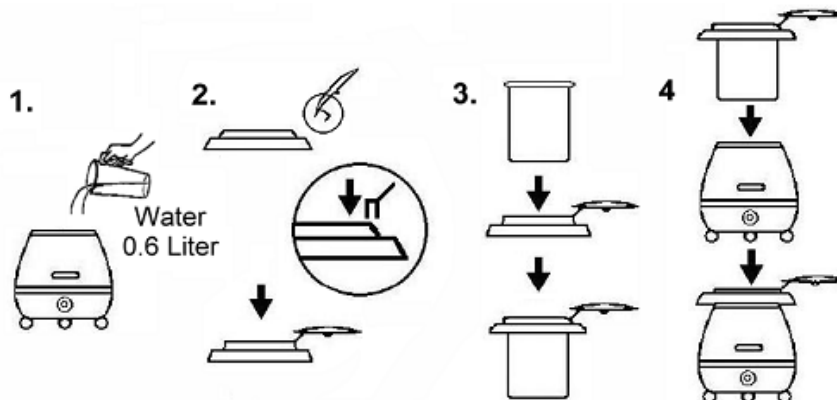
*Never move or carry the kettle when the unit is switched on, or containing hot food.

*Spilled food should be removed immediately from all exterior surfaces. The stainless steel bain marie and lid are machine washable. The painted exterior and top collar should be wiped over with a damp, soapy cloth.

*Ensure the unit is unplugged when not in use, when filling and when being cleaned.

*Children or infirm persons should not operate these appliances, unless adequately supervised

*The kettle must not be cleaned with a high-pressure jet.



IMPORTANT—NEVER IMMERSE THE KETTLE IN WATER AS DAMAGE TO THE UNIT WILL RESULT AND THE GUARANTEE WILL BE VOIDED. THIS APPLIANCE MUST BE EARTHED. DO NOT OPERATE THE KETTLE WHILE IT IS EMPTY.

Operating & Cleaning Instructions

BIRKO DELUXE SOUP & FOOD WARMER. Model No: 1030601- Black.

End of life disposal:

The use of this crossed out wheeled bin logo indicates that this product needs to be disposed of separately to any other household waste.

Within each of the European Union member countries, provisions have been made for the collection and recycling of unwanted electrical and electronic equipment. Outside of the EU it will be necessary to dispose of this product at your local community waste collection or recycling centre.

In order to help preserve our environment we ask that you dispose of this product correctly. Please contact your local city council for collection centre details.



Warranty Information

The Birko appliance you have chosen is precision-built and should give many years of trouble free service.

Birko Heaters Australia Pty Ltd warrants that, should any part fail within 12 calendar months of purchase, that part will be repaired or replaced free of charge by Birko or its Distributor or Service Provider, except as set out below, provided the appliance is installed and used strictly in accordance with the written instructions supplied, and that the failure is not due to accident, the use of a non-standard power supply, misuse, abuse, unsuitable water conditions, or to any alteration, modification or repair by any party not expressly nominated by Birko.

No costs are payable by the customer other than any mileage or travelling time charges incurred by a Birko Service Provider or the cost of removal, cartage and re-installation of any component of the appliance if it needs to be returned for repair to Birko or its Distributor.

This warranty does not cover damage resulting from non-operation of the appliance, the use of non authorised parts or consequential damage to any other goods, furnishings or property.

Furthermore, this warranty does not displace any statutory warranty, but, to the extent to which Birko is entitled to do so, the liability of Birko under any statutory warranty will be limited at Birko's option to the replacement of the appliance or supply of equivalent appliance, the payment of the cost of replacing the appliance or acquiring an equivalent appliance, or the payment of the cost of having the appliance repaired or the repair of the appliance.

Registering Your Purchase

Registering your purchase on the Birko website may help to establish date of purchase should it become necessary to service the appliance under terms of the Birko warranty. To register your installation go to www.birkoheaters.com and click on "Register your purchase".

How to contact us

If you have any questions or need some advice, please contact us at the address below:

Birko Heaters Australia Pty. Ltd.
 ABN 39 103 881 625
 32 Baker St. Richmond Vic. 3121 Australia.
 Telephone 1300 724 955
 Facsimile 1300 735 259
sales@birkoheaters.com
www.birkoheaters.com

The term 'Birko' is a registered trade mark of Birko Heaters Australia Pty. Ltd.
 July 2006